

## CHP Workshop for Federal Facilities

June 21, 2006

Spazio's at Westport  
12031 Lackland Road  
St. Louis, Missouri 63146

8:30 AM to 4PM

Lunch provided

On-line registration only

Learn about:

Local utility issues

The latest technology to assist your facility in meeting mandated guidelines

Project financing programs

## WHY YOU SHOULD ATTEND

FEMP is conducting a series of Combined Heat and Power (CHP) workshops. This first workshop will be held in St. Louis, MO. Local federal facility energy managers in the St. Louis area would benefit from this June 21, 2006 workshop, which will cover energy and emission reduction requirements for federal facilities, methods to meet current and 2010 requirements, methods to finance projects that reduce energy and meet legislative goals, and an opportunity to work with the local utility. This workshop will focus on combining heat recovery with power generation to reduce BTU/Sq Ft of energy use including improving reliability, national security, and indoor air quality.

### CHP topics to be covered:

- Power generation
- Waste heat recovery
- Use of waste heat for air conditioning, dehumidification and other purposes
- DOE/FEMP review of Energy Policy Act
- Life cycle costing
- Site vs. source emissions credit
- Project financing

## CHP Workshop for Federal Facilities in Laclede Gas Territory

June 21, 2006 (8:30 – 4PM)  
Laclede Gas  
Spazio's at Westport  
12031 Lackland Road  
St. Louis, Missouri 63146



THIS PROGRAM IS SPONSORED BY Laclede gas IN CONJUNCTION WITH THE ENERGY SOLUTIONS CENTER INC., THE FEDERAL ENERGY MANAGEMENT PROGRAM AND THE U.S. DEPARTMENT OF ENERGY.

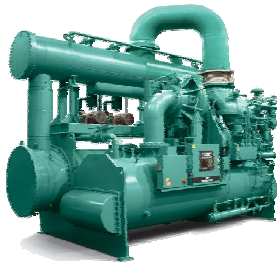
## What's included in the Combined Heat and Power Workshop

### FEMP Overview

- Energy Policy Act and other Legislation
- FEMP's Distributed Energy Program
- Energy & Emissions Reduction
- CHP Initial Screening and Technical Assistance available

### High Level Overview of CHP

- What is CHP and why consider it?



### Prime Movers

- Internal Combustion Engine Generators
- Combustion Turbines
- Micro Turbines and/or Fuel Cells

### Thermally Activated Equipment & Heat Recovery

- Heat Recovery
- Absorption & Steam Turbine Chillers
- Solid and Liquid Desiccant Systems

### Federal Site Case Study

### Energy & Emissions Reduction

- BTU/Square Foot reduction – CHP calculation
- Emissions: Site versus Source Credit mechanism

### Financing

- Options: UESC or ESPC mechanism for alternative financing.

### Q&A session

## On-line Registration Only

REGISTER FOR THIS EVENT:

<http://www.fempcentral.com/workshops/registration.ws>

VIEW THE CALENDAR OF ALL FEMP EVENTS AT:

<http://www.eere.energy.gov/femp/newsevents/events.cfm>

FOR MORE INFORMATION CONTACT:

Eric Burgis

[eburgis@escenter.org](mailto:eburgis@escenter.org)

Phone: (610) 796-1946

